



TWIN 3.0 U/UH – TWIN 3.5 U/UH

Double Scissors Lift

Parts Breakdown

ET500101-en



Lifting Technology



Premium Workshop
Equipment

© MAHA Maschinenbau Haldenwang GmbH & Co. KG

Legal notice based on ISO 16016:

The reproduction, distribution and utilization of this document as well as the communication of its contents to others without explicit authorizations is prohibited. Offenders will be held liable for the payment of damages. All rights reserved in the event of the grant of a patent, utility model or design.

The contents of this edition have been checked with great care. However. Errors cannot be fully excluded. Subject to technical change without notice.

Document

Document N^o: ET500101-en
Approval Date: 04.04.2005

Manufacturer

MAHA Maschinenbau Haldenwang GmbH & Co. KG
Hoyen 20
87490 Haldenwang
Germany

Phone: +49 (0) 8374 585 0
Fax: +49 (0) 8374 585 590
Fax Parts: +49 (0) 8374 585 565
Internet: <http://www.maha.de>
E-Mail: maha@maha.de
Hotline: +49 (0) 180 56242 60 for Brake Testers and Test Lanes
+49 (0) 180 56242 80 for Automotive Lifts
+49 (0) 180 56242 90 for Dynamometers and Emission Testers

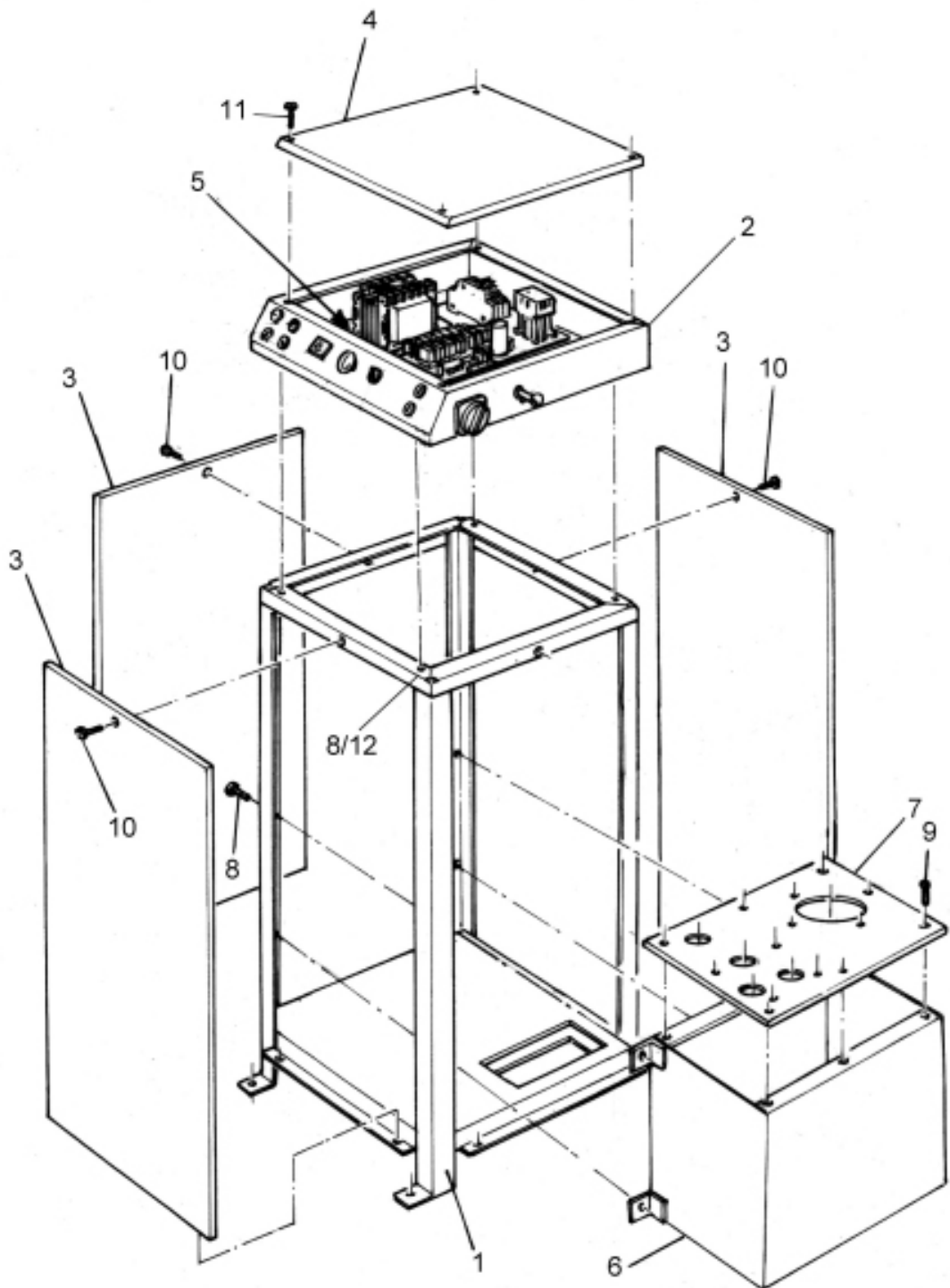
Service

AutomoTec GmbH
Maybachstraße 8
87437 Kempten
Germany
Phone: +49 (0) 180 56242 50
Fax: +49 (0) 180 56242 55
Internet: <http://www.automo-tec.com>
E-Mail: service@automo-tec.com

CONTENT

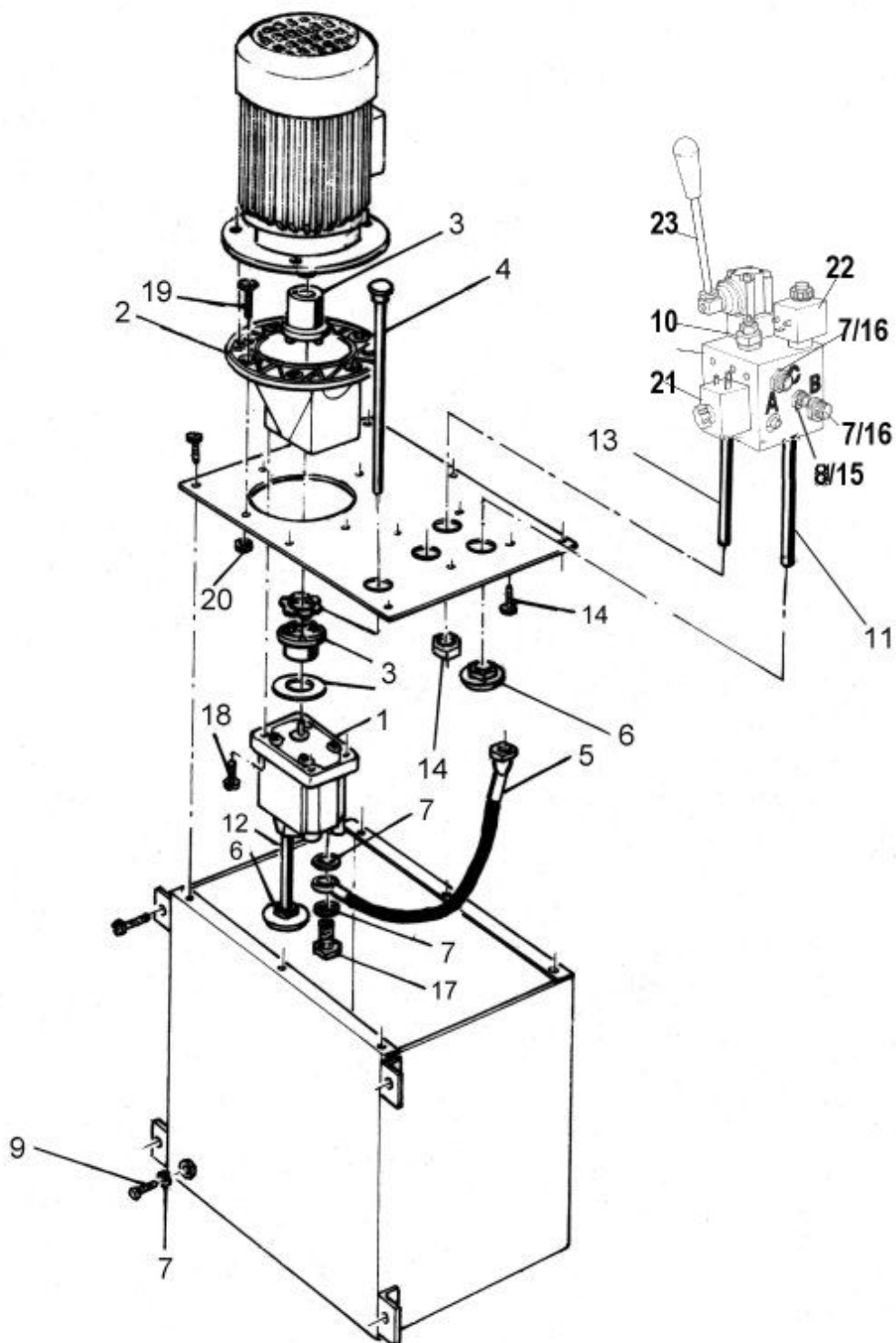
1	Parts Breakdown.....	1
1.1	CONTROL UNIT TYPE U.....	2
1.1.1	POWER UNIT	4
1.1.1.1	POWER UNIT MOTOR	6
1.1.2	CONTROL DESK HEAD.....	8
1.2	CONTROL UNIT TYPE UH.....	10
1.2.1	HYDRAULIC CONNECTION POWER UNIT	12
1.2.2	PNEUMATIC CONNECTION POWER UNIT.....	14
1.2.3	POWER UNIT MOTOR.....	15
1.2.4	CONTROL DESK HEAD.....	16
1.3	FLOOR PLATE.....	18
1.4	RUNWAY.....	19
1.5	SCISSORS.....	20
1.5.1	UPPER SCISSORS	20
1.5.2	LOWER SCISSORS	21
1.6	HYDRAULIC GROUP.....	22
1.6.1	HYDRAULIC CONNECTION	22
1.6.2	CYLINDER (Part 1).....	23
1.6.3	CYLINDER (Part 2).....	24
1.7	SENSORS.....	26
1.7.1	SENSORS.....	26
1.7.2	CONNECTION	27
1.8	PNEUMATIC	28
1.9	HOSE.....	29
1.10	RUBBER PAD	30

1.1 CONTROL UNIT TYPE U



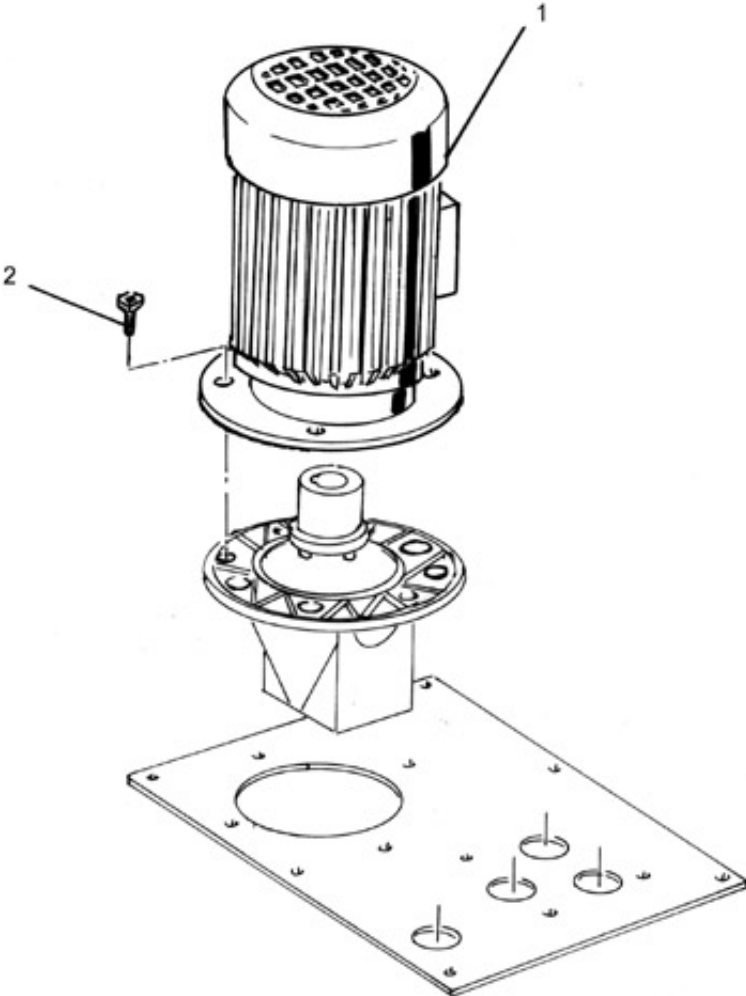
Item	Part	Description
1		CONTROL DESK FRAME
2		CONTROL DESK HEAD
3		SIDE PANEL
4		COVER HEAD
5		PLATE
6		OIL TANK
7		COVER TANK
8		SCREW M6X20 DIN 912 UNI 5931
9		SCREW M6X16 ISO 7380
10		SCREW 6X30 ISO 7380
11		SCREW M4.2X13 DIN 7981 UNI 6954
12		NUT M6 DIN 934 UNI 5588

1.1.1 POWER UNIT



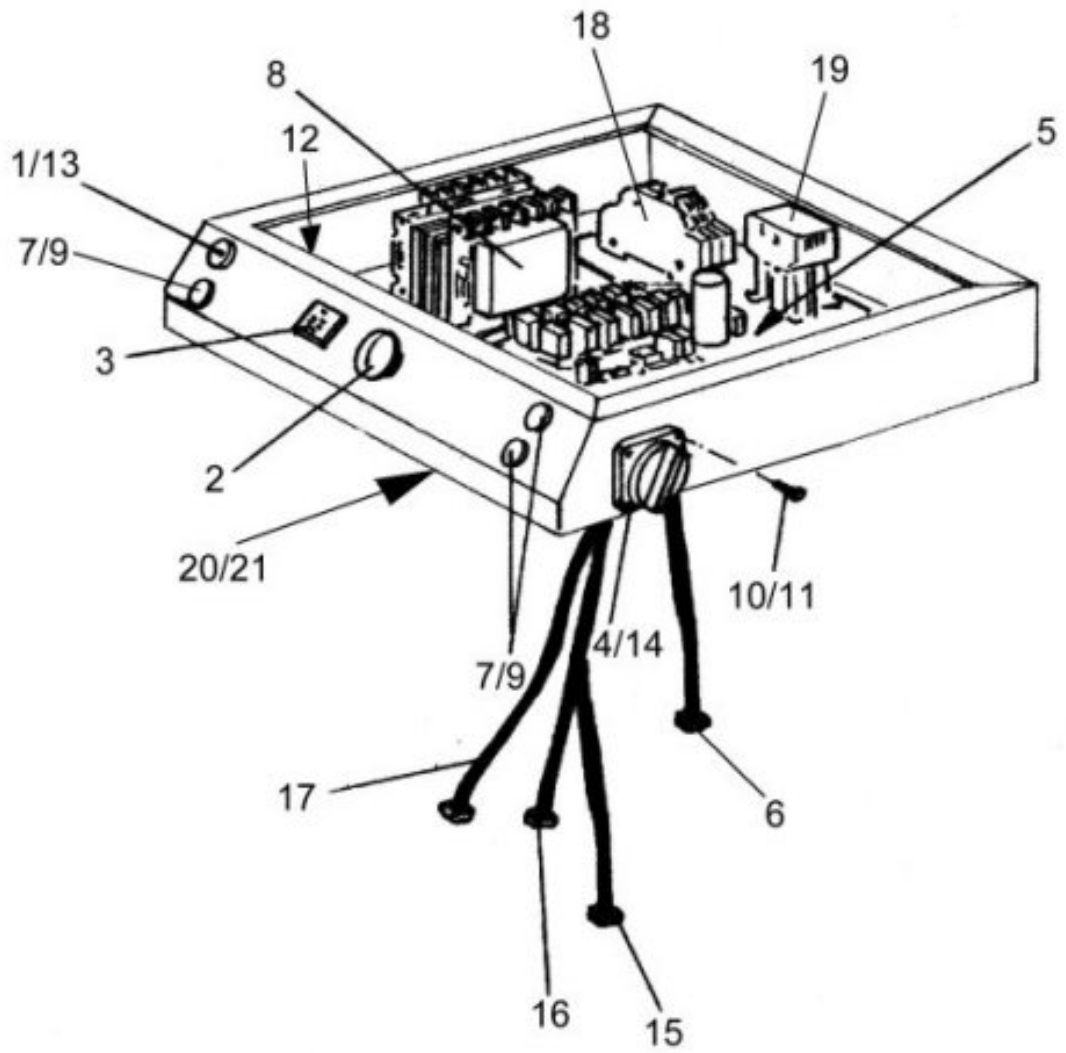
Item	Part	Description
1	91 08 2025	HYDRAULIC PUMP
2		PUMP SPIDER
3	91 08 2001	JOINT
4		TANK PLUG
5	91 08 2090	HOSE R2 AT 3/8" L=300mm
6	91 08 2005	SUCTION FILTER 3/8"
7	91 08 2032	COPPER WASHER 3/8"
8	91 08 2045	COPPER WASHER 1/4"
9		TANK PLUG
10	91 08 2219	HYDRAULIC GROUP
11		THREADED HOSE 3/8" L=280mm
12		THREADED HOSE 3/8" L=115mm
13		THREADED HOSE 1/4" L=280mm
14		SCREW M8X16 DIN 912 UNI 5931
15	91 08 2018	NIPPLES 1/4"
16	91 08 2180	NIPPLES 3/8"
17	91 08 2031	HOLED BOLT 3/8"
18		SCREW M6X30 DIN 912 UNI 5931
19		SCREW M10X20 DIN 912 UNI 5931
20		SELF-LOCK NUT M10 DIN 982 UNI 7473
21	91 08 2244	LEVELING SOLENOID VALVE
22	91 08 2243	LOWERING SOLENOID VALVE
23	91 08 2242	MANUAL PUMP

1.1.1.1 POWER UNIT MOTOR



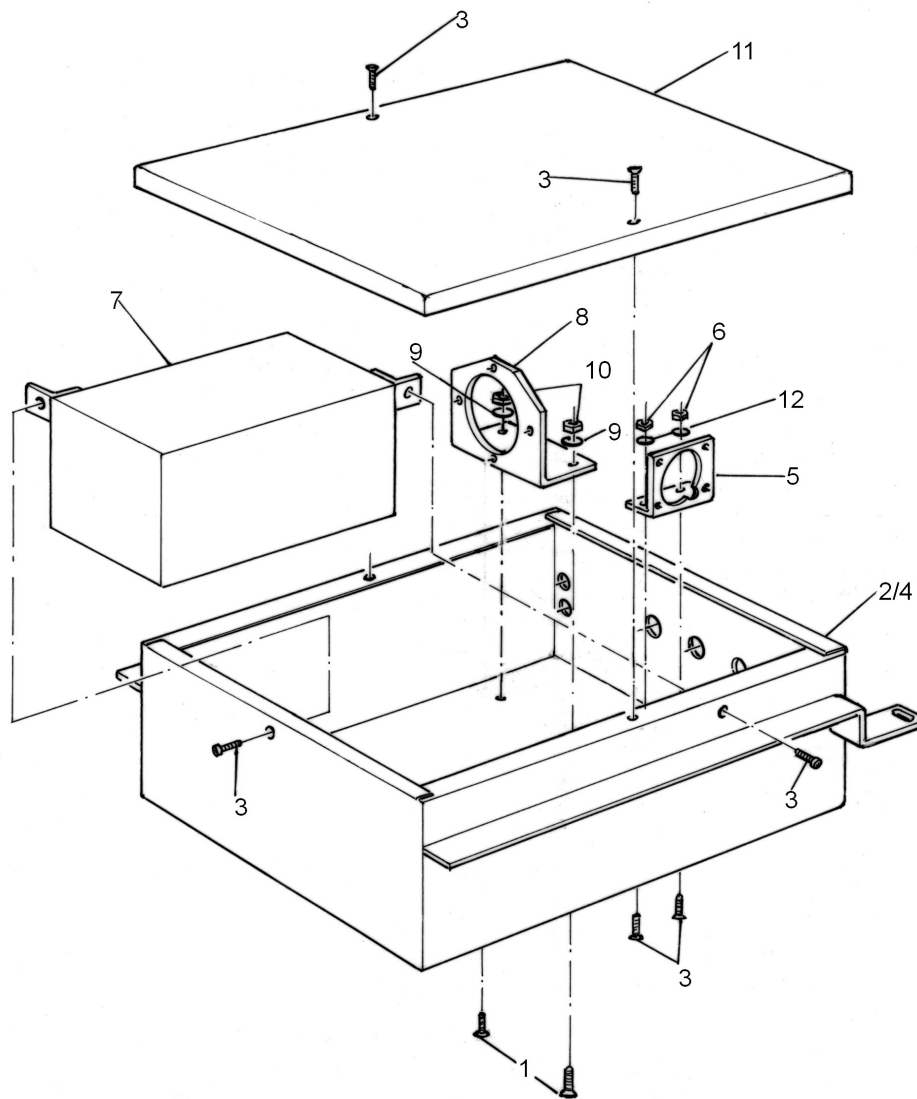
Item	Part	Description
1	91 08 2011	MOTOR 3kW B5P4 230/400V
2		SCREW M10X20 DIN 912 UNI 5931

1.1.2 CONTROL DESK HEAD



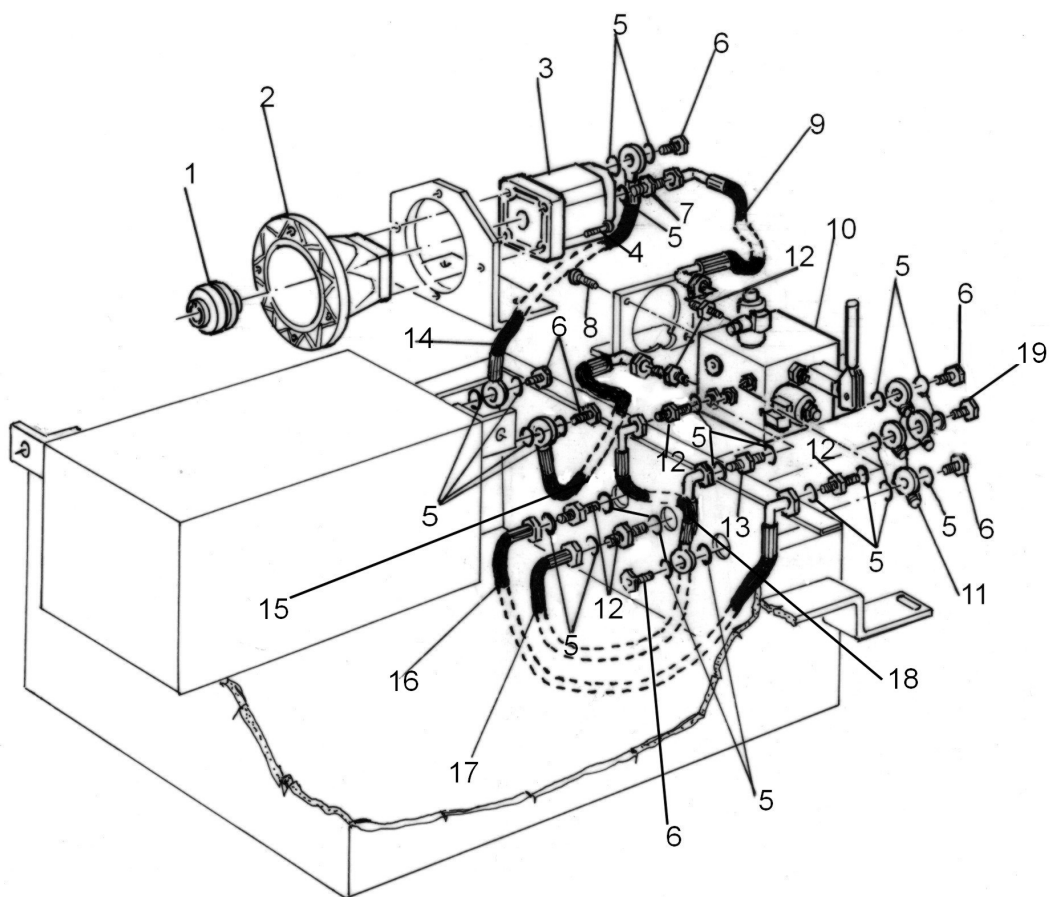
Item	Part	Description
1		GREEN PILOT LAMP
2	91 08 2116	EMERGENCY PUSH BUTTON
3	91 08 2036	BEEPER
4		FINISHING
5	91 08 2190	ELECTRIC BOARD T01
6		AIR ELECTRIC CABLE
7	91 08 2100	BLACK PUSH BUTTON
8	91 08 2102	TRANSFORMER
9	91 08 2101	BUTTON WITH ARROW
10		SCREW M4X20 DIN 7985 UNI 7687
11		NUT M4 DIN 934 UNI 5588
12		BUTTON CABLE
13	91 08 2098	LAMP 30V 2W
14		MAIN SWITCH WITH CABLE
15		LOWERING ELECTRIC CABLE
16		MOTOR CABLE
17		LEVELING ELECTRIC CABLE
18		FUSE CARRIER
19	91 08 2039	CONTACTOR 4kW
20		CONTACT
21		PANEL PLUG
	91 08 2012	AIR SOLENOID VALVE
	91 08 2109	"L" CONNECTION

1.2 CONTROL UNIT TYPE UH



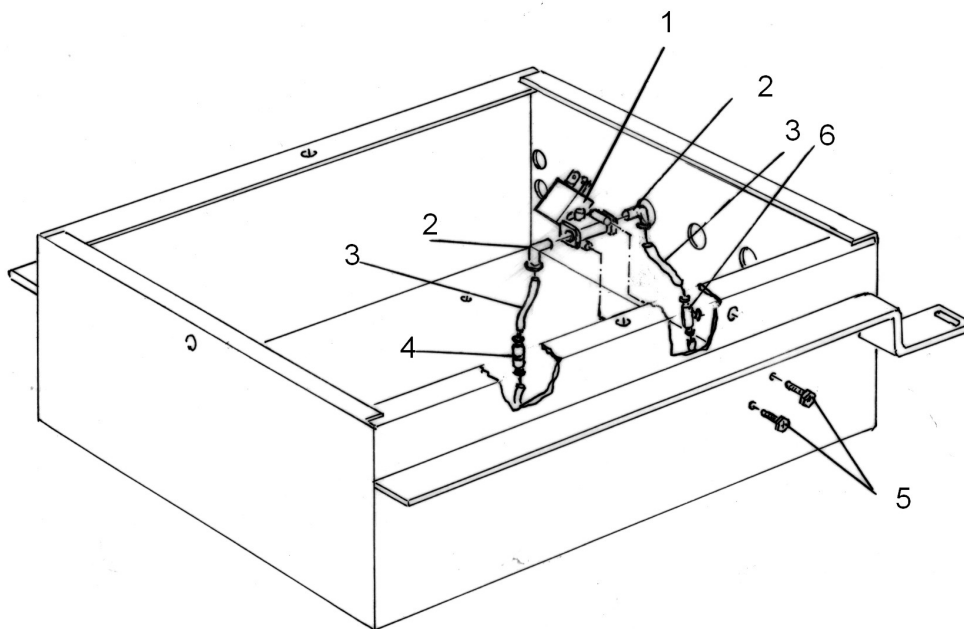
Item	Part	Description
1		SCREW M8X25 DIN 7991 UNI 5933
2		BOX P1 (3.0t-version) BOX P1 (3.5t-version)
3		SCREW M6X20 DIN 912 UNI 5931
4		BOX P2 (3.0t-version) BOX P2 (3.5t-version)
5		BRACKET SOLENOIDE VALVE
6		NUT M6 DIN 934 UNI 5588
7		OIL TANK
8		BRACKET MOTOR-PUMP
9		WASHER M8 DIN 125 UNI 6592
10		NUT M8 DIN 934 UNI 5588
11		BOX COVER
12		WASHER M6 DIN 125 UNI 6592

1.2.1 HYDRAULIC CONNECTION POWER UNIT



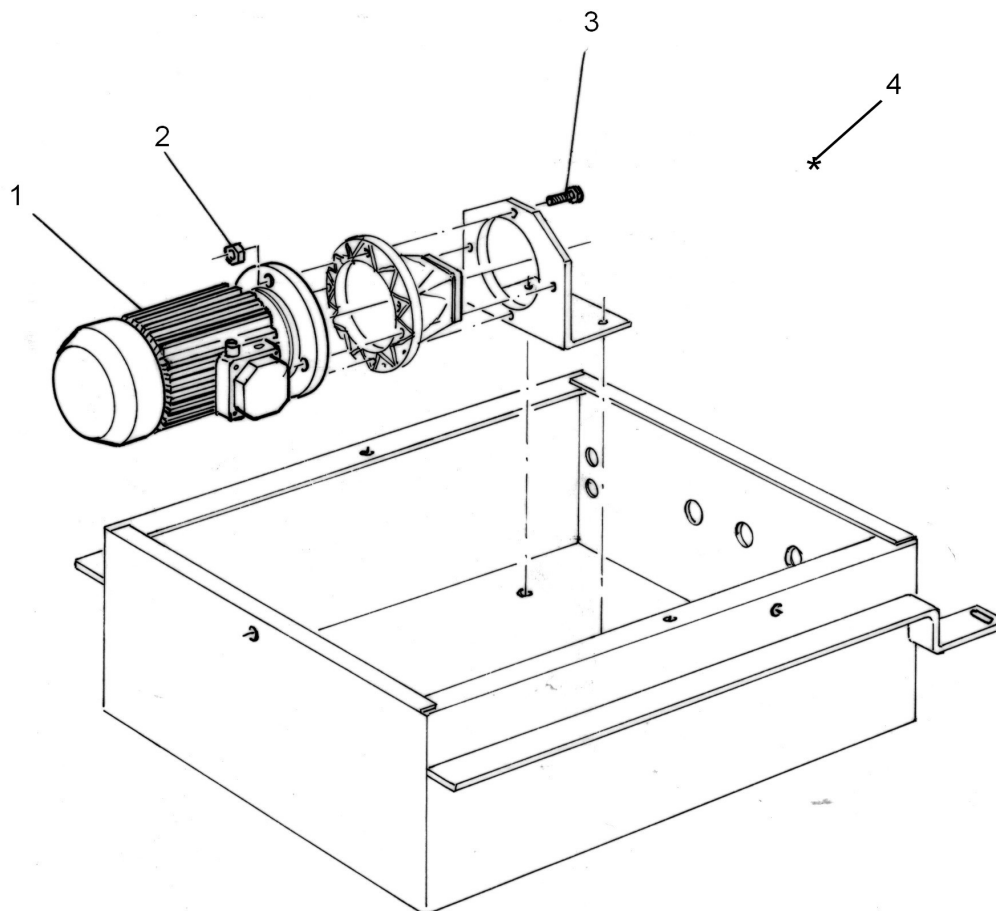
Item	Part	Description
1	91 08 2001	JOINT
2		PUMP SPIDER
3	91 08 2025	HYDRAULIC PUMP
4		SCREW M6X30 DIN 912 UNI 5931
5	91 08 2032	COPPER WASHER 3/8"
6	91 08 2031	HOLED BOLT 3/8"
7	91 08 2018	NIPPLES 1/4"
8		SCREW M8X16 DIN 912 UNI 5931
9	91 08 2170	HOSE R2T 1/4" L=250mm
10	91 08 2205	HYDRAULIC GROUP
11		FIXED EYE 3/8
12	91 08 2180	NIPPLES 3/8"
13	91 08 2106	NIPPLES 1/4 - 3/8"
14	91 08 2167	HOSE R1T 3/8" L=650mm
15	91 08 2172	HOSE R1T 1/4" L=350mm
16	91 08 2171	HOSE R2T 1/4" L=250mm
17	91 08 2169	HOSE R2T 1/4" L=220mm
18	91 08 2168	HOSE R1T 1/4" L=300mm
19	91 08 2192	HOLED BOLT 3/8"

1.2.2 PNEUMATIC CONNECTION POWER UNIT



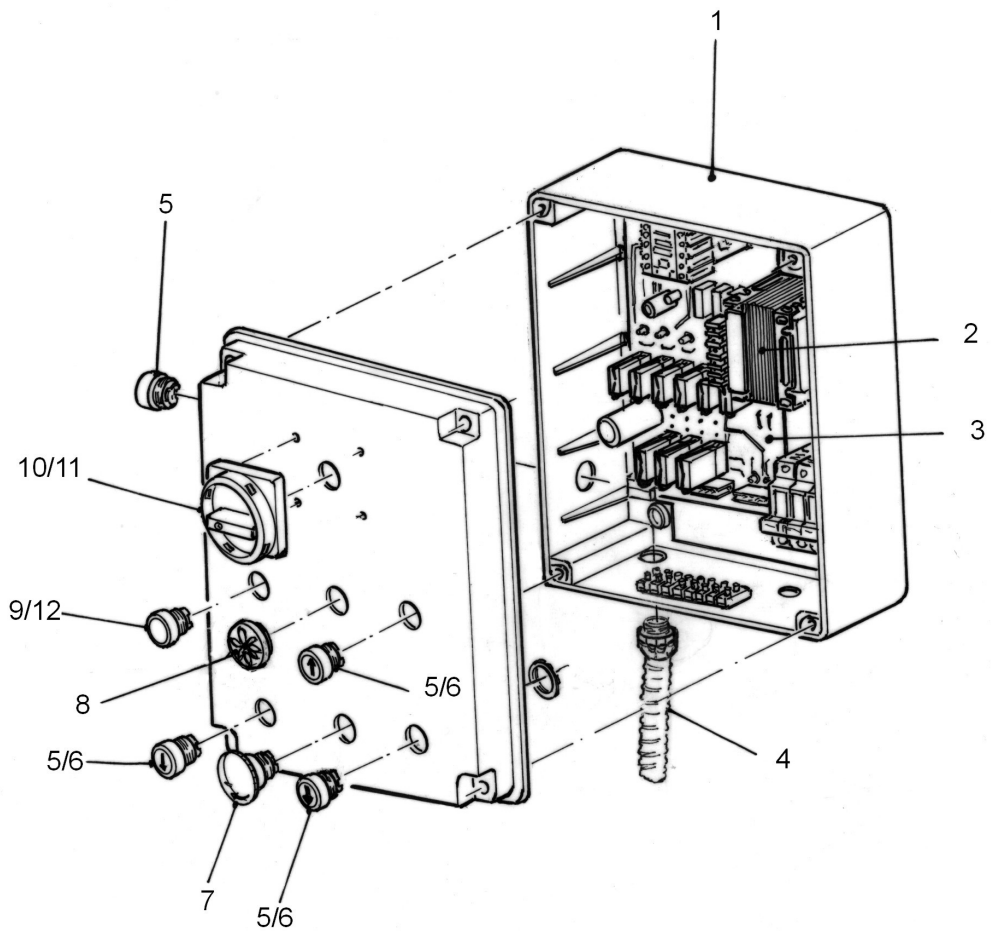
Item	Part	Description
1	91 08 2012	AIR SOLENOID VALVE
2	91 08 2109	"L" CONNECTION
3	91 08 2023	WHITE AIR HOSE
4	91 08 2187	AIR CONNECTION
5		SCREW M3X10 DIN 7985 UNI 7687
6	91 08 2107	"T" CONNECTION

1.2.3 POWER UNIT MOTOR



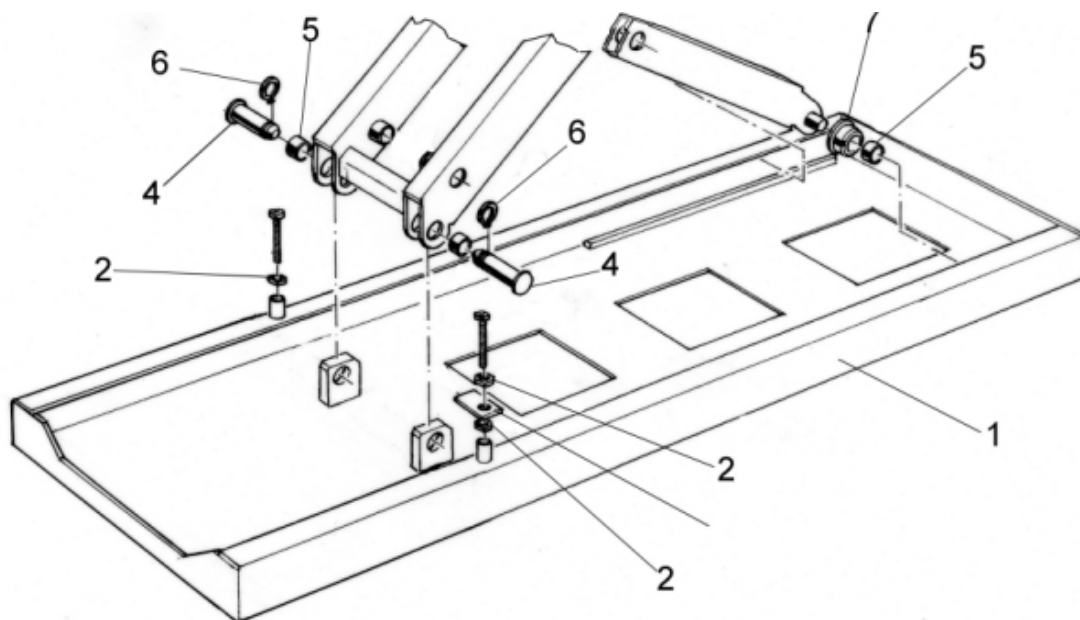
Item	Part	Description
1	91 08 2011	MOTOR 230/400V 3kW
2		NUT M10 DIN 934 UNI 5588
3		SCREW M10X40 DIN DIN 933 UNI 5739

1.2.4 CONTROL DESK HEAD



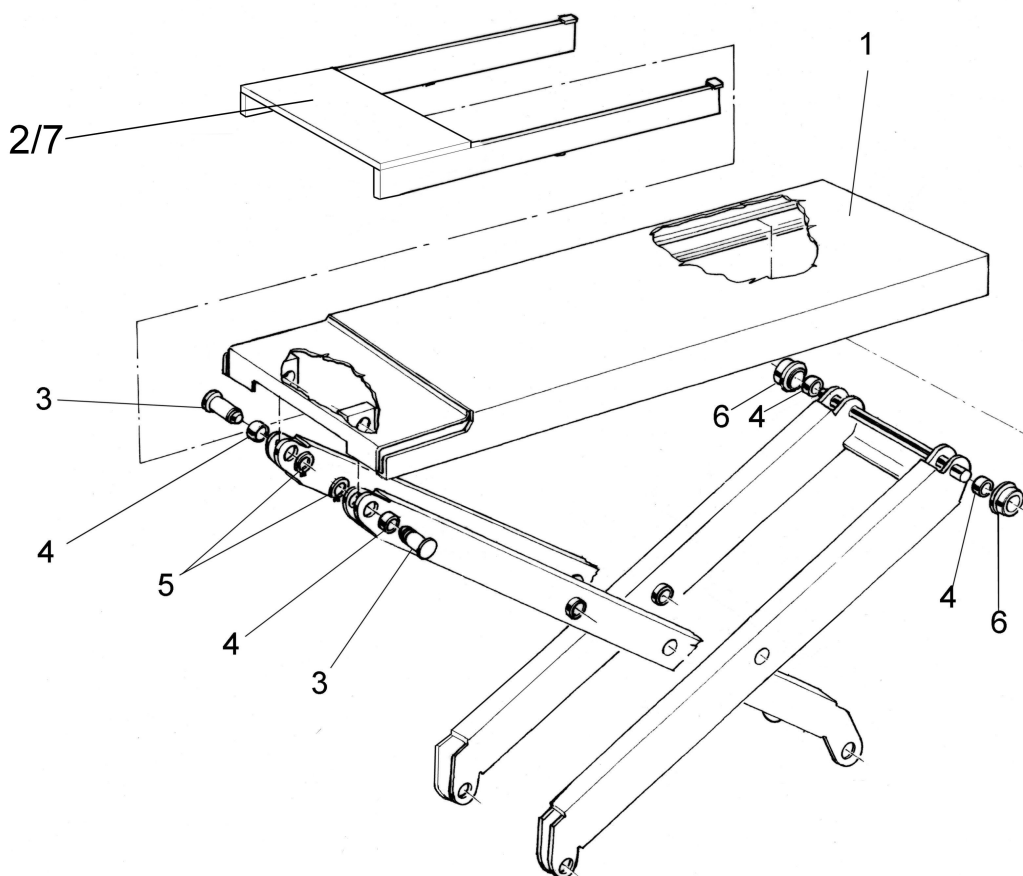
Item	Part	Description
1		PLASTIC BOX GW 44209
2	91 08 2102	TRANSFORMER
3	91 08 2190	ELECTRIC BOARD T01
4		CONTROL UNIT CONN. CABLE
5	91 08 2100	BLACK PUSH BUTTON
6	91 08 2101	BUTTON WITH ARROW
7	91 08 2116	EMERGENCY PUSH BUTTON
8	91 08 2036	BEEPER
9		GREEN PILOT LAMP
10		FINISHING
11		MAIN SWITCH
12	91 08 2098	LAMP 30V 2W

1.3 FLOOR PLATE



Item	Part	Description
1		BASE FRAME
2		NUT M14 DIN 934 UNI 5588
3		LEVELLING SYST. BRACKET
4		FIXING PIN
5	91 08 2065	SELF-LUBR. BUSHING 30X30
6		SEGER E30 DIN 471 UNI 7435
7		GUIDE ROLLER

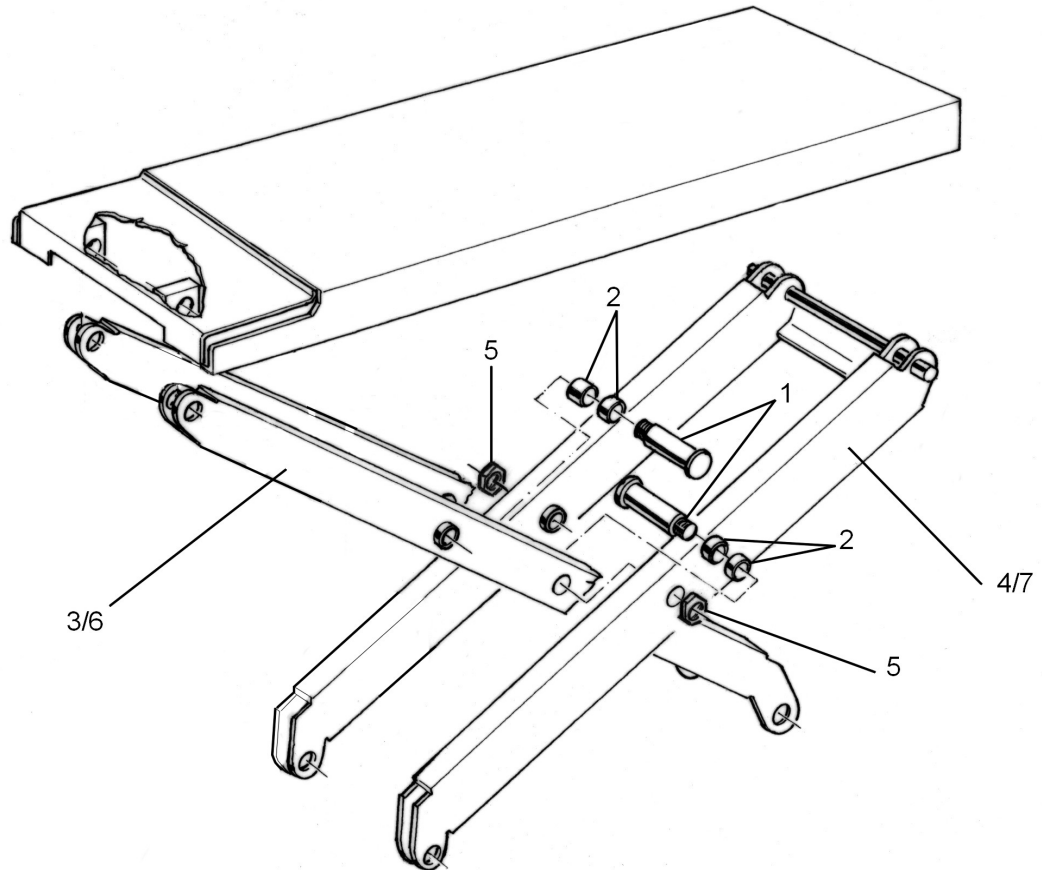
1.4 RUNWAY



Item	Part	Description
1		RUNWAY
2		EXTENSION P2 SX =LEFT
3		FIXING PIN
4	91 08 2065	SELF-LUBR. BUSHING 30X30
5		SEEGER E 30 DIN 471 UNI 7435
6		GUIDE ROLLER
7		EXTENSION P1 DX = RIGHT

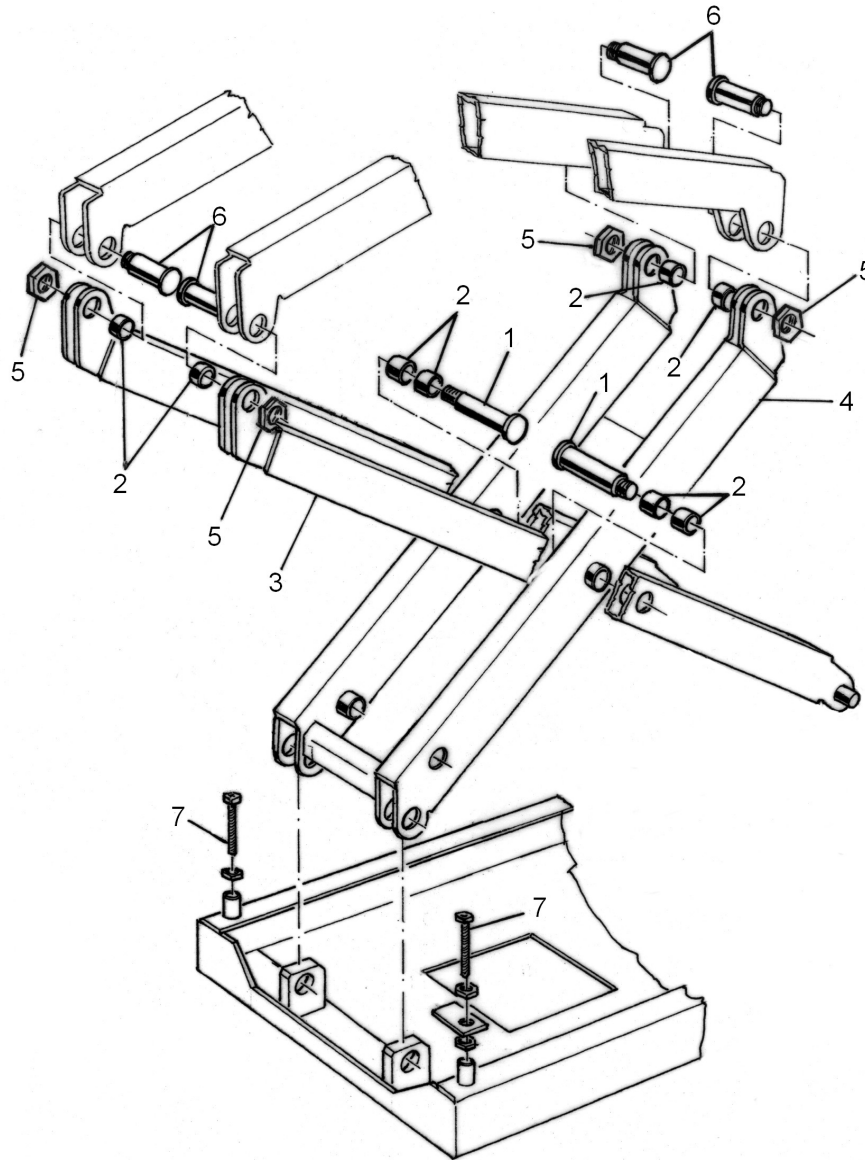
1.5 SCISSORS

1.5.1 UPPER SCISSORS



Item	Part	Description
1		ARMS CONNECTION PIN
2	91 08 2065	SELF-LUBR. BUSHING 30X30
3		INTERNAL UPPER ARM P1 (3.0t-version) INTERNAL UPPER ARM P1 (3.5t-version)
4		EXTERNAL UPPER ARM P1 (3.0t-version) EXTERNAL UPPER ARM P1 (3.5t-version)
5		SELF- LOCK. NUT M25X1,5 UNI 982DIN747
6		EXTERNAL UPPER ARM P2 (3.0t-version) EXTERNAL UPPER ARM P2 (3.5t-version)
7		INTERNAL UPPER ARM P2 (3.0t-version) INTERNAL UPPER ARM P2 (3.5t-version)

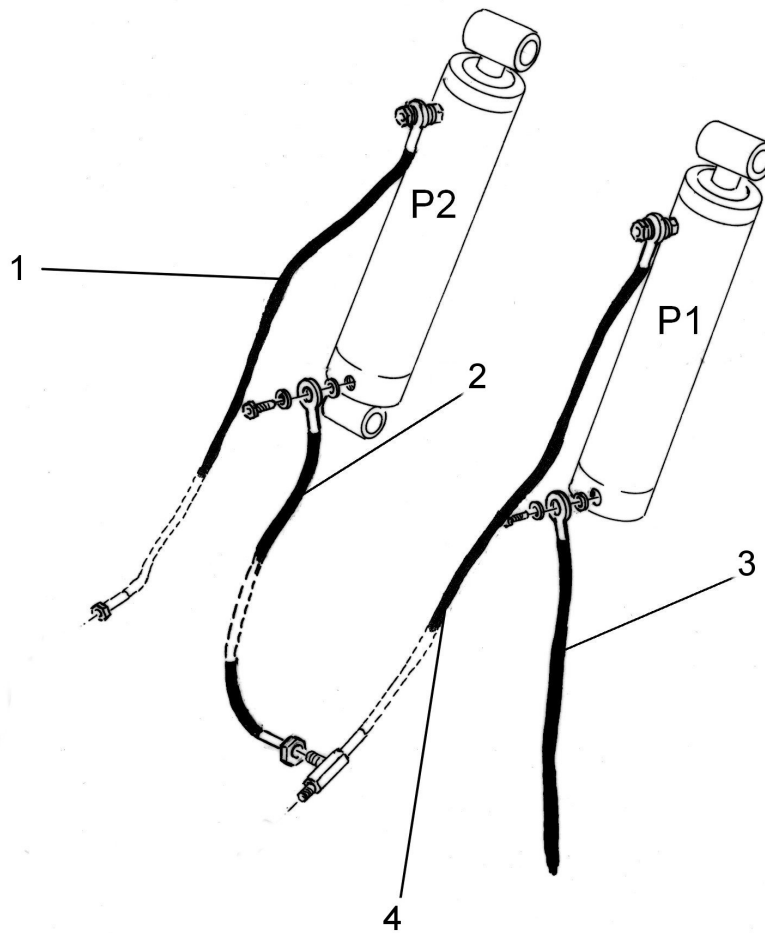
1.5.2 LOWER SCISSORS



Item	Part	Description
1		ARMS CONNECTION PIN
2	91 08 2065	SELF-LUBR. BUSHING 30X30
3		INTERNAL LOWER ARM (3.0t-version) INTERNAL LOWER ARM (3.5t-version)
4		EXTERNAL LOWER ARM (3.0t-version) EXTERNAL LOWER ARM (3.5t-version)
5		SELF- LOCK.NUT M25X1,5 UNI 982DIN747
6		ARMS FIXING PIN
7		SCREW M14X50 DIN 933 UNI 5793(3.0t-version) SCREW M14X90 DIN 933 UNI 5793(3.5t-version)

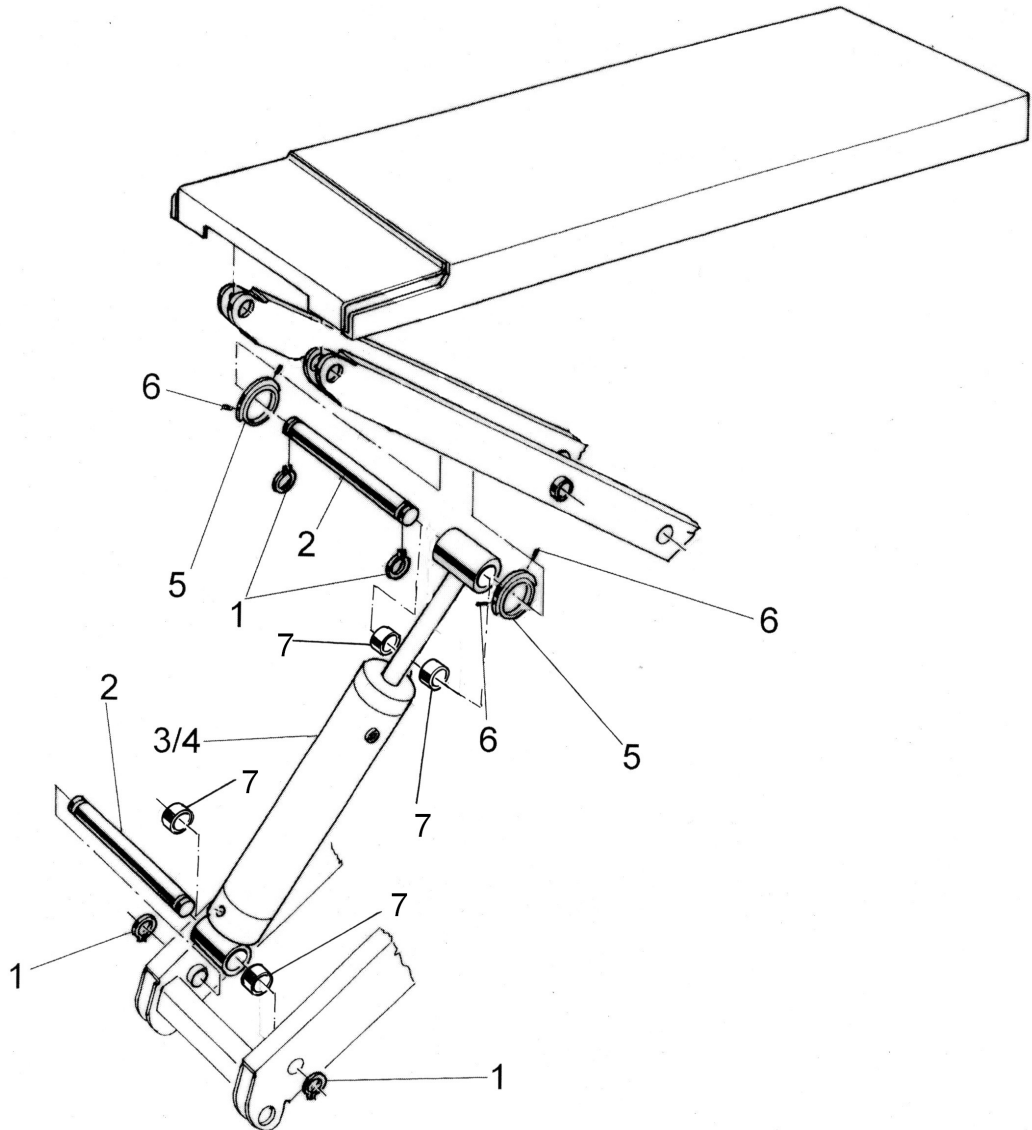
1.6 HYDRAULIC GROUP

1.6.1 HYDRAULIC CONNECTION



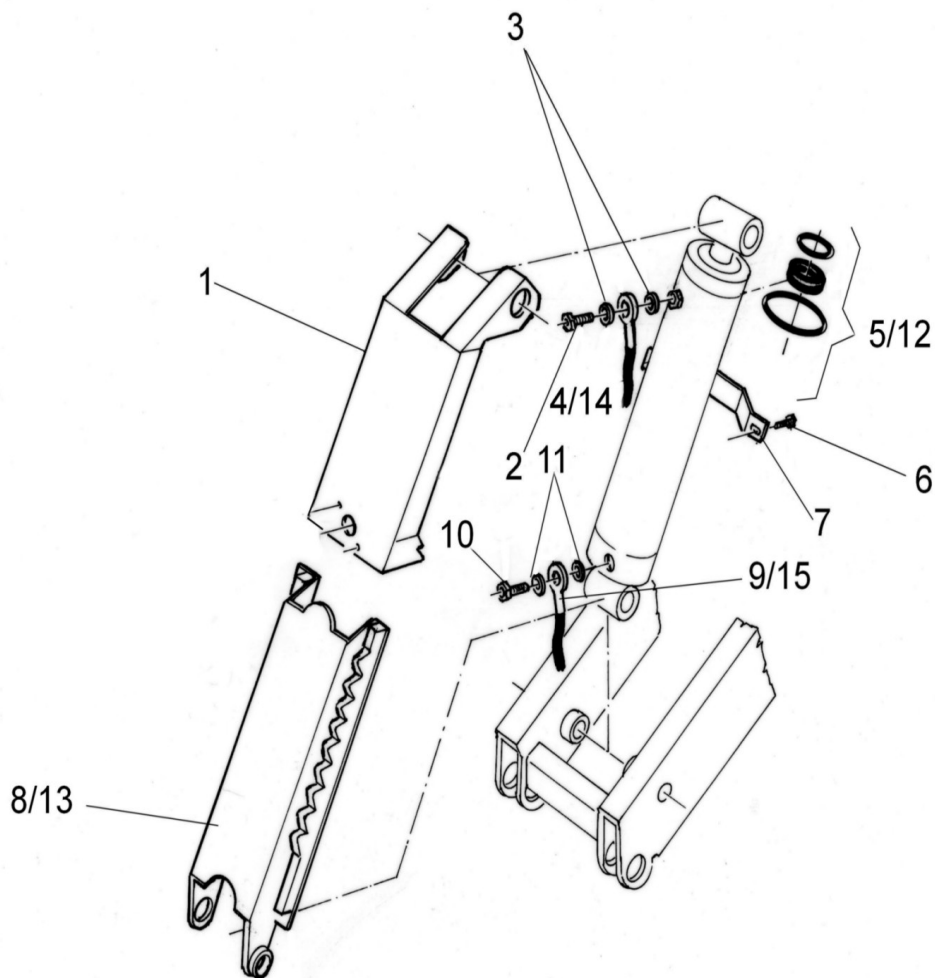
Item	Part	Description
1	91 08 2175	HOSE R1 AT 1/4" L=2560mm (P2) (Type UH only)
2	91 08 2176	HOSE R2 AT 1/4" L=1900mm (leveling) (Type UH only)
3	91 08 2174	HOSE R2 AT 1/4" L=450mm (P1) (Type UH only)
4	91 08 2173	HOSE R2 AT 1/4" L=1000mm (P1) (Type UH only)

1.6.2 CYLINDER (Part 1)



Item	Part	Description
1		SEEGER E 35 DIN 471 UNI 7435
2		CYLINDER FIXING PIN
3		CYLINDER P1
4		CYLINDER P2
5		CAM
6		DOWEL M5X10 DIN 913 UNI 5923
7	91 08 2179	SELF-LUBR. BUSHING

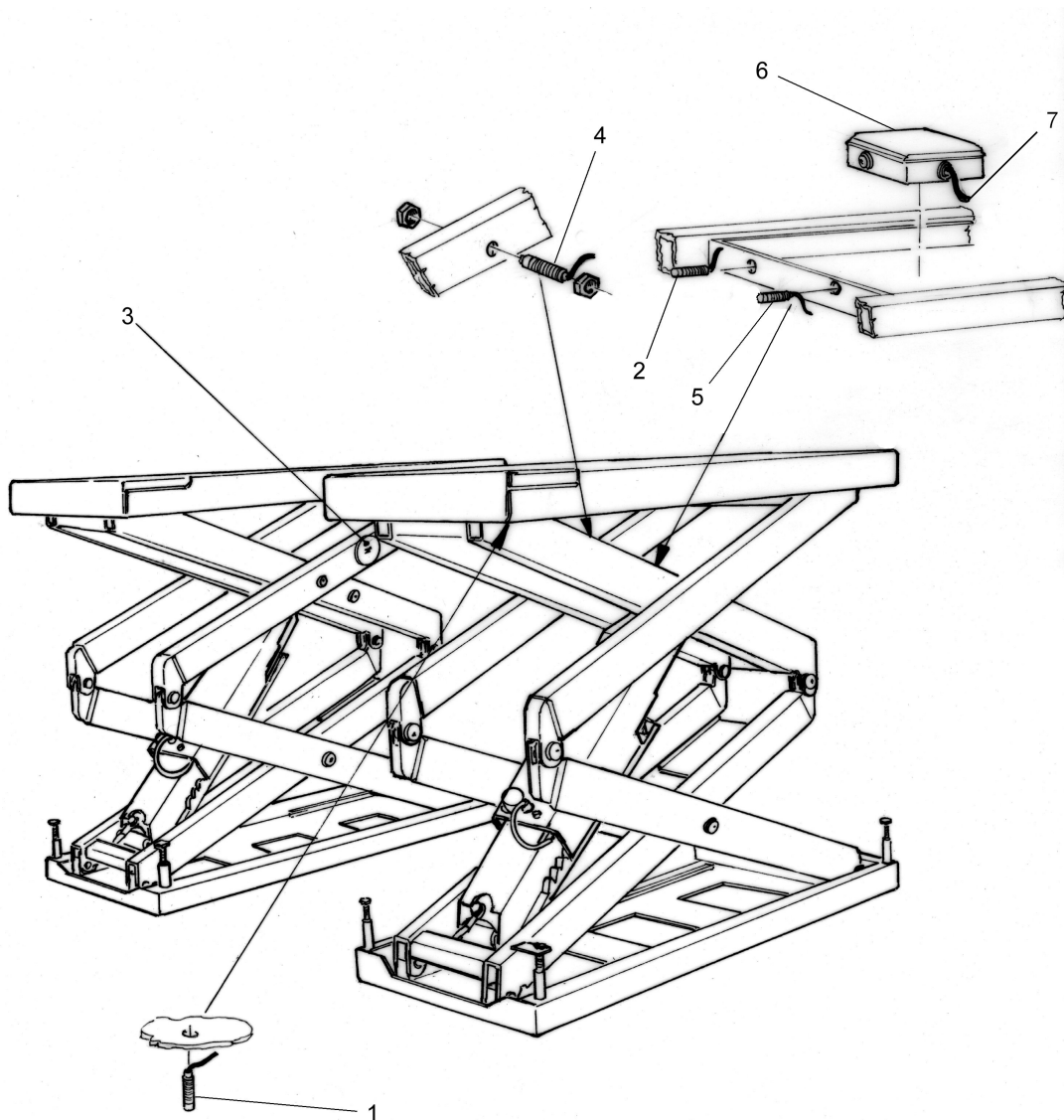
1.6.3 CYLINDER (Part 2)



Item	Part	Description
1	91 08 2094	SAFETY SPIKE
2	91 08 2047	HOLED BOLT 1/4"
3	91 08 2045	COPPER WASHER 1/4"
4	91 08 2184	HOSE R2 AT 1/4" L=820mm (P1) (<i>Type U only</i>)
	91 08 2173	HOSE R2 AT 1/4" L=1000mm (P1) (<i>Type UH only</i>)
5	91 08 2182	GASKET P1
6		SCREW M10X20 DIN 933 UNI 5739
7		CYLINDER BRACKET
8	91 08 2177	MECHANICAL SAFETY P1
9	91 08 2183	HOSE R2 AT 1/4" L=3450mm (leveling) (<i>Type U only</i>)
	91 08 2176	HOSE R2 AT 1/4" L=1900mm (leveling) (<i>Type UH only</i>)
10	91 08 2031	HOLED BOLT 3/8"
11	91 08 2032	COPPER WASHER 3/8"
12	91 08 2181	GASKET P2
13	91 08 2178	MECHANICAL SAFETY P2
14	91 08 2186	HOSE R1 AT 1/4" L=820mm (P2) (<i>Type U only</i>)
	91 08 2175	HOSE R1 AT 1/4" L=2560mm (P2) (<i>Type UH only</i>)
15	91 08 2185	HOSE R2 AT 1/4" L=1480mm (P1) (<i>Type U only</i>)
	91 08 2174	HOSE R2 AT 1/4" L=450mm (P1) (<i>Type UH only</i>)

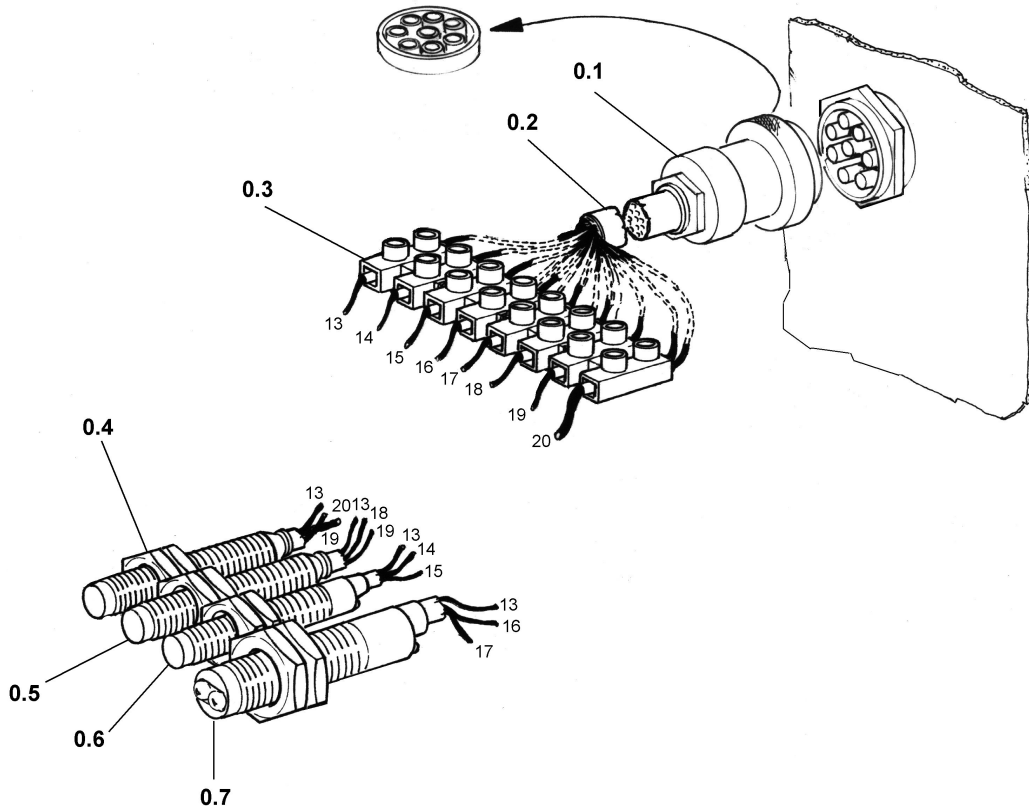
1.7 SENSORS

1.7.1 SENSORS



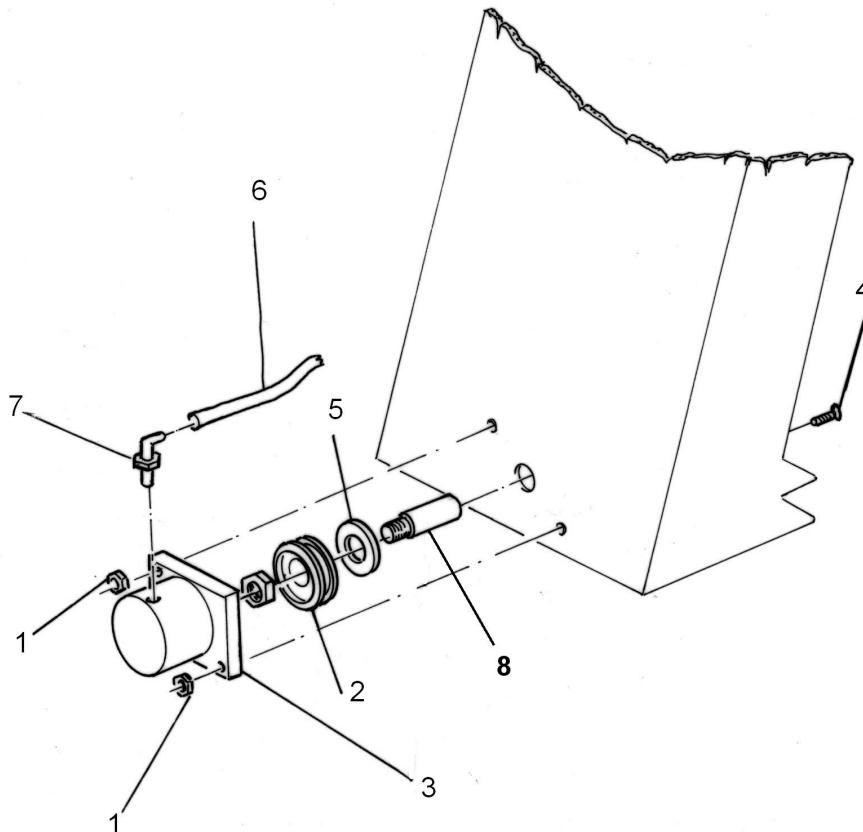
Item	Part	Description
1	91 08 2207	RUNWAY LEVEL LS NO 2mt
2	91 08 2206	LOWER RUNWAY LS NO 2mt
3	91 08 2189	REFLECTOR
4	91 08 2188	PHOTOCELL OCV-81-C-PNP-NO
5	91 08 2205	UPPER RUNWAY LS NO 2mt
6		ELECTRIC BOX GEW 4404
7		CABLE WITH CONNECTOR

1.7.2 CONNECTION



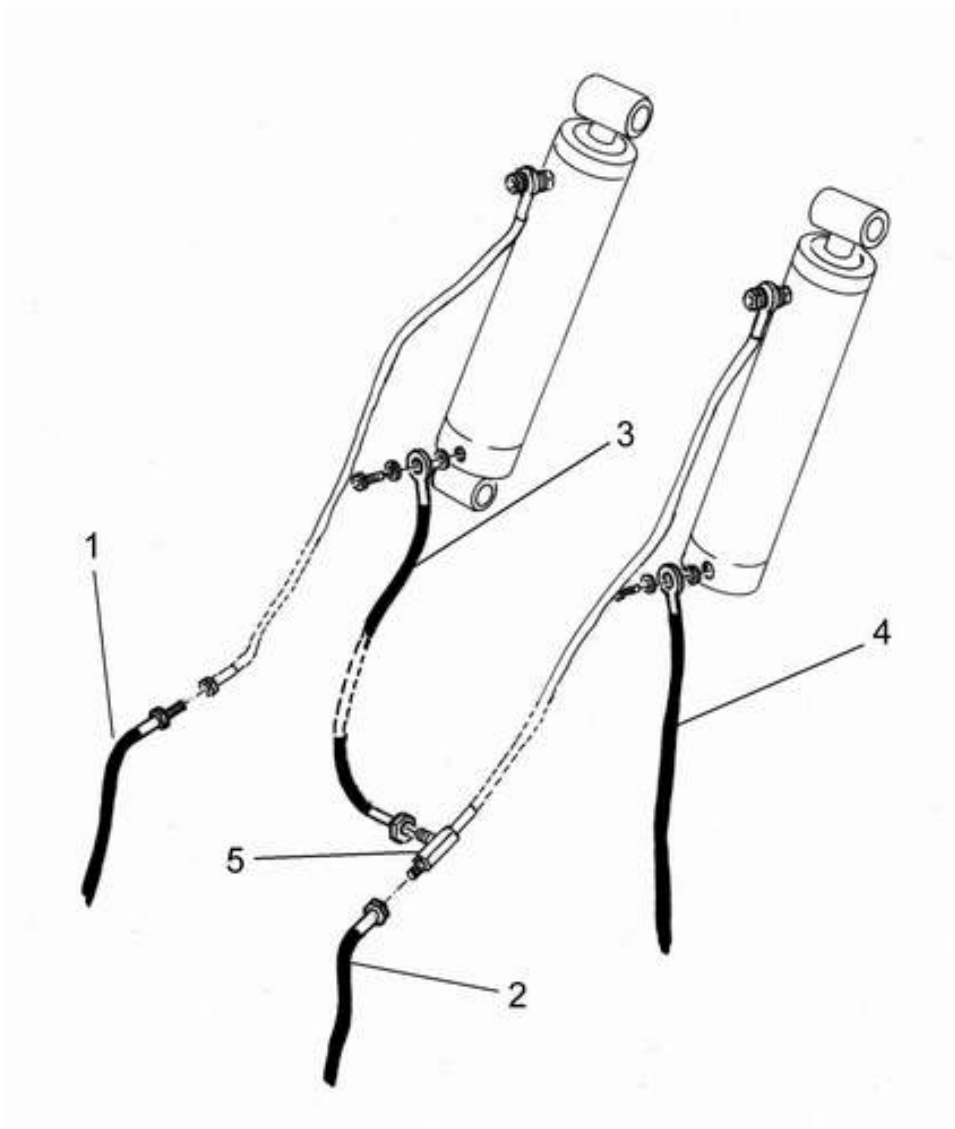
Item	Part	Description
		CABLE WITH CONNECTOR
0.1		FEMALE CONNECTOR 8P
0.2		CABLE 8X0,5
0.3		TERMINAL E 110 J
0.4	91 08 2207	RUNWAY LEVEL LS NO 2mt
0.5	91 08 2205	UPPER RUNWAY LS NO 2mt
0.6	91 08 2206	LOWER RUNWAY LS NO 2mt
0.7	91 08 2188	PHOTOCELL OCV-81-C-PNP-NO

1.8 PNEUMATIC



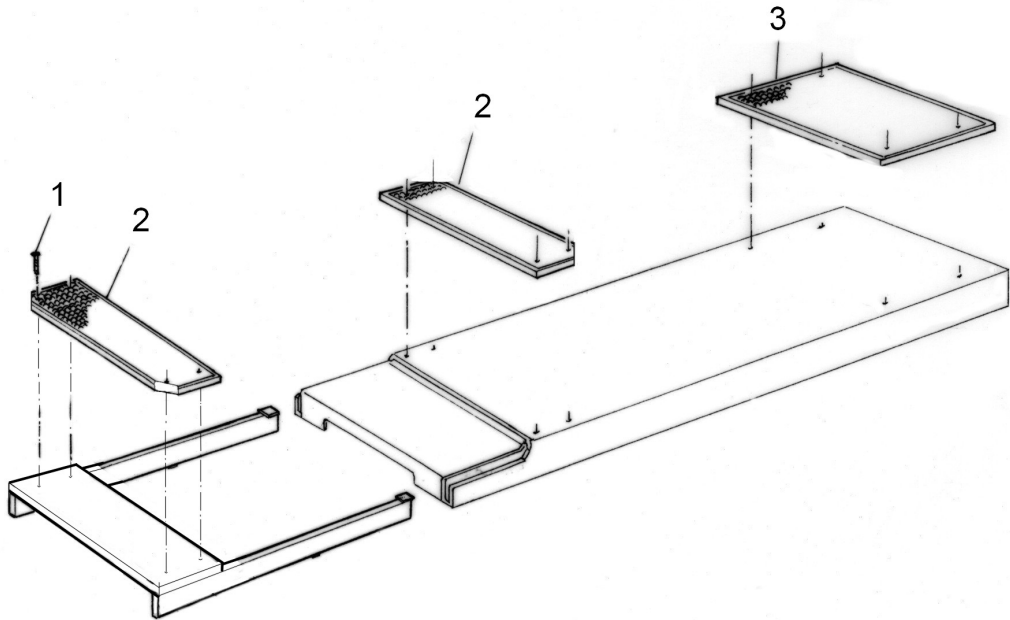
Item	Part	Description
1		NUT M6 DIN 934 UNI 5588
2		GASKET TDUOP 40
3		AIR CYLINDER
4		SCREW M6X30 DIN 7991 UNI 5933
5		WASHER
6	91 08 2023	WHITE AIR HOSE (p.mt.)
7	91 08 2109	"L" CONNECTION
8		AIR CYLINDER-ROD
	91 08 2024	AIR CYLINDER (complete)

1.9 HOSE



Item	Part	Description
1	91 08 2237	HOSE "B" R1T L=4250 mm
2	91 08 2241	HOSE "C" R2T 1/4" L= 3350 mm
3	91 08 2236	HOSE "E" R2T 1/4" L=1480 mm
4	91 08 2238	HOSE "A" R2T 1/4" L= 3450 mm
5	91 08 2166	"T" CONNECTION 3/8"

1.10 RUBBER PAD



Item	Part	Description
1		SCREW 8X8 DIN 912 DIN 5931
2		RUBBER PAD 520x220x15mm
3		RUBBER PAD 520x440x15mm